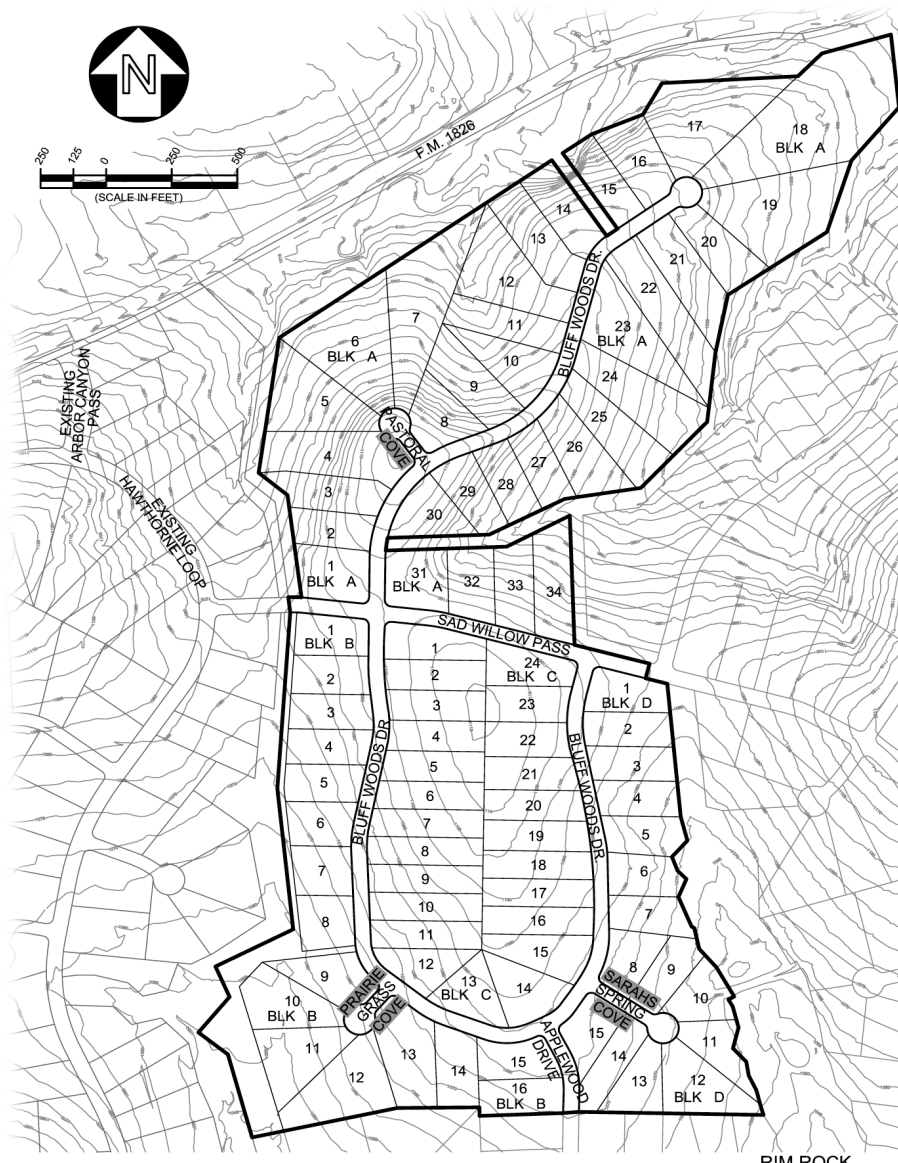


RimRock

Phase 2 • Section 2

Price List

BLOCK A



Lot	Sales Price	Acres
1	88,900	1.31
2	86,900	1.00
3	90,000	1.31
4	SOLD	2.22
5	85,900	2.13
6	87,900	2.99
7	83,900	3.13
8	85,900	1.20
9	83,900	1.52
10	84,900	1.37
11	85,900	1.32
12	89,900	2.22
13	88,900	1.57
14	87,900	1.29
15	88,900	1.10
16	91,900	1.39
17	99,900	2.91
18	SOLD	5.43
19	SOLD	3.15
20	SOLD	1.30
21	SOLD	1.72
22	SOLD	2.12
23	SOLD	2.09
24	SOLD	2.17
25	95,900	1.69
26	93,900	1.56
27	89,900	1.01
28	87,000	1.02
29	SOLD	1.11
30	89,900	1.13
31	SOLD	1.28
32	84,900	1.14
33	SOLD	1.19
34	SOLD	1.53

BLOCK C

Lot	Sales Price	Acres
1	88,900	1.11
2	86,900	1.06
3	85,900	1.02
4	84,900	1.01
5	83,900	1.07
6	82,900	1.03
7	81,900	1.09
8	81,900	1.11
9	81,900	1.10
10	80,900	1.08
11	80,900	1.07
12	80,900	1.03
13	SOLD	1.08
14	82,900	1.25
15	83,900	1.27
16	82,900	1.06
17	82,900	1.05
18	82,900	1.04
19	82,900	1.10
20	83,900	1.03
21	84,900	1.03
22	86,900	1.01
23	88,900	1.03
24	89,900	1.11

BLOCK B

Lot	Sales Price	Acres
1	86,900	1.00
2	SOLD	1.01
3	86,900	1.00
4	87,900	1.01
5	88,900	1.00
6	88,900	1.00
7	87,900	1.00
8	88,900	1.00
9	87,900	1.25
10	88,900	1.52
11	SOLD	1.63
12	SOLD	2.14
13	87,900	1.83
14	SOLD	1.13
15	79,900	1.04
16	79,900	1.03

BLOCK D

Lot	Sales Price	Acres
1	87,900	1.05
2	86,900	1.04
3	86,900	1.02
4	87,900	1.01
5	89,900	1.03
6	89,900	1.02
7	89,900	1.00
8	83,900	1.00
9	83,900	1.00
10	88,900	1.02
11	SOLD	1.01
12	SOLD	1.60
13	81,900	1.05
14	77,900	1.01
15	78,900	1.02

For sales information CALL JOHN LLOYD BROKER DEVELOPER

July 15, 2008 Phase 2 Sec 2 Complete